



2009 N.I.T.E. Ride June 27, 2009 Information Sheet



See below for the complete Event Schedule, and the next page for a map and directions to the Major Taylor Velodrome. Are you registered? If not, go to < www.active.com > and **reserve your place NOW!**

The N.I.T.E. Ride is not just a night-time event, but a full day packed with bicycling activities!

EVENT SCHEDULE

8:00 AM	Morning "Club Ride" with Central Indiana Bicycling Association. Starts from Major Taylor Velodrome. Ride lengths are 17, 32, 45, and 58 miles. Marked route, map/cue sheet, SAG support, and food stops (bananas, cookies and water) are provided. Free and open to the public.
4:00 PM	REGISTRATION, CHECK-IN, & C.I.B.A. MERCHANDISE BOOTH OPEN
3:00 - 5:00PM	Ride the Velodrome Race Track! (Bicycle helmet required!)
5:00 - 11:00PM	Veli-Deli at Major Taylor Velodrome open for dinner
5:00 - 7:30 PM	Dinner Ride! Ride length is about 19 miles; starts & ends at the Major Taylor Velodrome; maps and Ride Leaders are provided; dinner on your expense during the ride
7:00 - 10:30 PM	United States Cycling Federation Track Races - Watch exciting racing on the Major Taylor Velodrome track! Check out the CIBA Merchandise Booth, displays from vendors, cycling organizations, and more!
10:00 PM	REGISTRATION and CHECK-IN CLOSED (Merchandise open thru 10:45)
→ → →	PLAN TO ARRIVE WELL BEFORE 10:00PM TO CHECK IN!!! ← ← ←
10:15 PM	"L.I.T.E. Up Your Bike" Contest (in front of the Velodrome)
10:45 PM	"L.I.T.E. Up Your Bike" Contest Prize-Winner Presentation and Bicycle Garage Indy / GIANT Bicycles Cruiser Bike Giveaway (you must be present - ready to ride - to be eligible)
11:00 PM	N.I.T.E. RIDE BEGINS
12:30 AM-2:00 AM	Post-Ride Party - Free dinner and live music!
	Ride the Velodrome Race Track! (Open through 1:30AM)
2:00 AM	HAVE A SAFE TRIP HOME!

What Should I Bring?

- Bicycle - in good working order!
- **BICYCLE HELMET REQUIRED!** Eye protection (clear riding glasses) also recommended
- **HEADLIGHT REQUIRED!** Bicycle Garage Indy will have headlights for sale at the event.
- Also, there will be **CIBA Logo taillights on sale at the merchandise booth!**
- Bring a piece of I.D., tools for minor repairs, and rain gear just in case
- **NO ALCOHOL PERMITTED!** Remember, drinking and bicycling don't mix!
- Know and obey Indiana traffic laws! Stay on your side of the center line; stop at red lights and stop signs; obey course marshals and ride officials; ride predictably and courteously!

→ → → **See Back For More Details!!!** ← ← ←

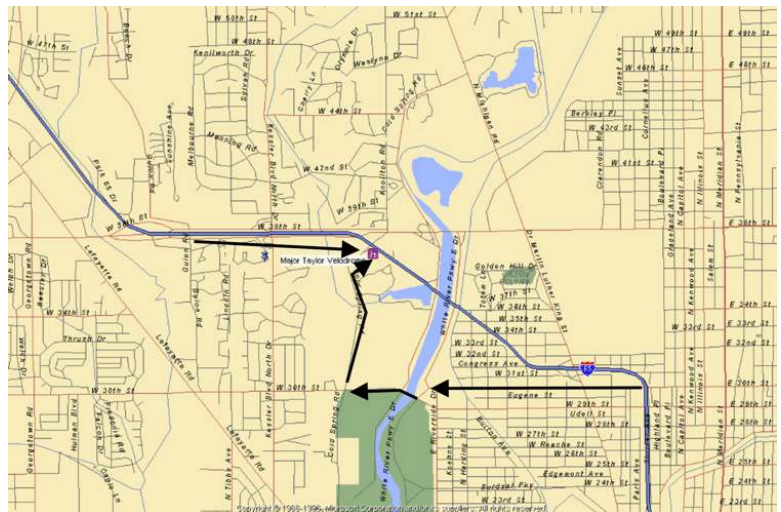
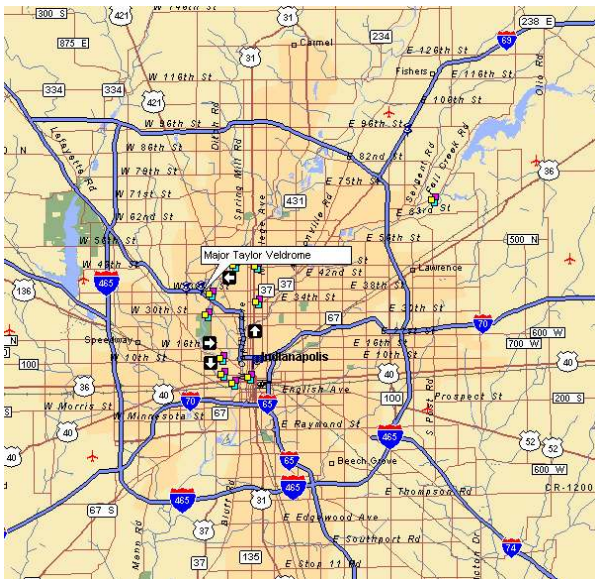
Perks for Pre-Registered Riders: All pre-registered riders will receive one N.I.T.E. Ride T-shirt, plus any additional shirts purchased with your registration, in the size(s) you selected. ***If you did not indicate a T-shirt size, you may be given an XL T-shirt. If you register on the day of the event, you will not receive a T-shirt.*** Also, only pre-registered riders are eligible for the **BGI/GIANT Cruiser Bike Giveaway!** All registered riders will receive refreshments at the Rest Stop and the Post-Ride Dinner. Special Edition N.I.T.E. Ride Sweatshirts and extra T-shirts will be on sale, subject to availability, through 10:45PM.

Dinner Ride: Group ride of about 19 miles starts at 5:00 PM at the Velodrome. Maps & Ride Leaders will be provided. Dinner (your own expense, generally less than \$10) will be available during the ride.

“L.I.T.E. Up Your Bike” Contest: L.I.T.E. Up Your Bike with lights, glow-in-the-dark sticks, or what have you, and compete for **great prizes from Bicycle Garage Indy!** Stipulations: *your lighting equipment and the light it creates must not pose a safety threat to yourself or other users of the road.*

The Bicycle Garage Indy / GIANT Bicycles Cruiser Bike Giveaway will be held at 10:45 PM in front of the Velodrome. ***You must be in front of the Velodrome, ready to ride, to be eligible!***

DIRECTIONS TO THE MAJOR TAYLOR VELODROME



From the Northwest: From the I-65 / I-465 interchange, proceed South on I-65 into Indianapolis. Take Exit 119B onto 38th Street (eastbound). Proceed straight and do not re-enter I-65. After about one mile, turn right at the stoplight onto Cold Spring Road. Major Taylor Velodrome will be on the left after about 0.2 miles.

From the Northeast: From the I-69 / I-465 interchange, proceed SW on Binford Blvd. about 6 miles and turn right (west) on 38th Street. After 3.2 miles turn left at the stoplight onto Cold Spring Road. MTV will be on the left after about 0.2 miles.

From the South/East: Proceed toward Downtown Indianapolis on I-70 from the I-70 / I 465 interchange, or on I-65 from the I-65 / I-465 interchange. From the I-65 / I-70 junction, take I-65 North toward Chicago. A few miles past Downtown Indianapolis, take Exit 116 (29th/30th Street). Upon exiting, continue North on ramp past 29th Street and turn left on 30th Street. Proceed West on 30th Street about two miles, following the signs for Marian College, to Cold Spring Road. Turn right and proceed North ½ mile. Major Taylor Velodrome is on the right, just north of Marian College.

From the West: On I-465, take exit 17 (38th Street) on the West side. Proceed east on 38th Street into Indianapolis about four miles. Turn right at the stoplight onto Cold Spring Road. Major Taylor Velodrome will be on the left after about 0.2 miles.

QUESTIONS? CALL THE N.I.T.E. RIDE HOTLINE: (317) 767-7765 # 3 OR WRITE TO < ddshields@comcast.net >